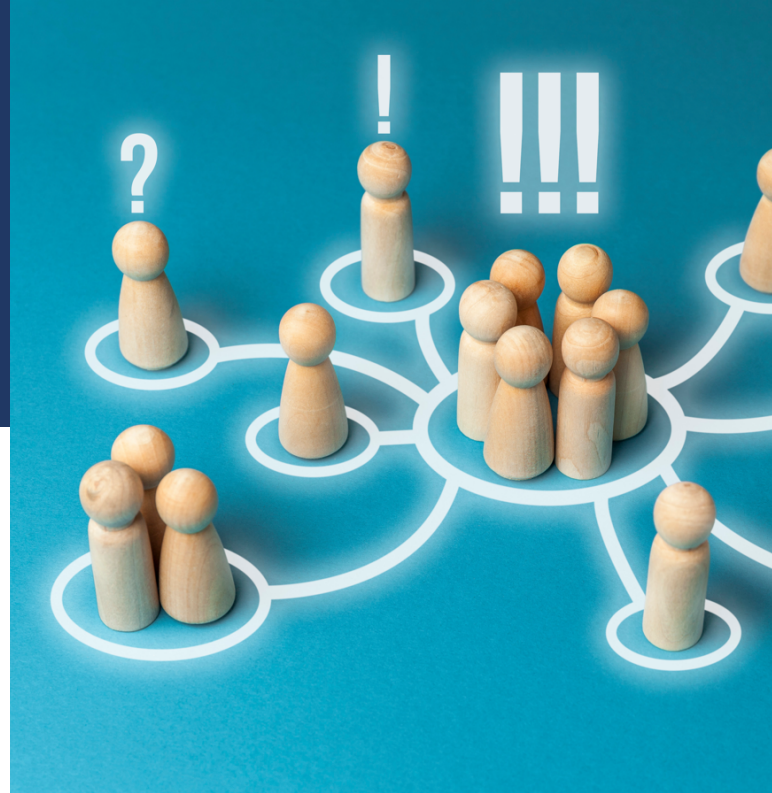


Certificate in **FAMILY SYSTEMS THEORY & APPLICATION** **2026 FEE STRUCTURE**



The *Certificate in Family Systems Theory and Application* is structured with a two-year core program plus additional program elements which can be completed alongside the program enrolment period or up to 8 years beforehand as part of the Recognised Prior Learning (RPL) pathway. RPL activities include the Family of Origin Research Program groups and Workshops. Payments can be made in full per year / group enrolment, or with a quarterly payment instalment plan.

CERTIFICATE IN FAMILY SYSTEMS THEORY AND APPLICATION – FEE STRUCTURE

CORE PROGRAM	CORE PROGRAM (2-YEAR ENROLMENT) Online with in-person / hybrid intensives	Bowen Family Systems Theory Modules* - Module 1: The Emotional System - Module 2: Differentiation of Self - Module 3: Chronic Anxiety - Module 5: Nuclear Family Emotional Process - Module 6: Triangles - Module 7: Multigenerational Emotional Process Collaborative Learning Intensives** Program orientation and review meetings	YEAR 1: \$2500+GST YEAR 2: \$2500+GST
	FAMILY OF ORIGIN RESEARCH PROGRAM (Online - groups run over 9 month period)	Family of Origin Research Group Family of Origin Group: The Self of the Leader / Therapist	\$1020+GST \$1020+GST
RECOGNISED PRIOR LEARNING	WORKSHOPS (Online - 3 hours each / 12 hours required)	Choose from a selection of FSI workshops from relevant topics each year (\$165+GST per workshop)	\$660+GST
TOTAL COST			\$7700+GST

*Three modules are run per year and can be completed in any order – for example, Module 1 will commence beginning of 2026, and Module 5 in 2027.

**All participants are required to fund their own travel and associated accommodation costs if travelling to events or intensives.

Exemption to in person attendance in Sydney for the Intensives is provided upon application for rural, interstate and international students.

BRINGING BOWEN FAMILY SYSTEMS THEORY TO LIFE

